

Obsidian Subsources Utilized at Sites in Southern Sardinia (Italy)

Robert H. Tykot¹, Michael D. Glascock², Robert J. Speakman³, and Enrico Atzeni⁴

¹Anthropology, University of South Florida, 4202 E. Fowler Ave., SOC107, Tampa, FL, 33620

²Research Reactor Center, University of Missouri-Columbia, Columbia, MO, 65211

³Museum Conservation Institute, Smithsonian Institution, Suitland, MD, 20746

⁴Dipartimento di Scienze Archeologiche e Storico-Artistiche, Università di Cagliari, Cagliari, Italy

ABSTRACT

While geochemical analysis of obsidian artifacts is now widely applied around the world, both new instrumental methods and new research questions continue to be applied in archaeology. In the Mediterranean, many analytical methods have been employed and proven successful in distinguishing all of the island sources. In this study, results are presented from the virtually non-destructive, LA-ICP-MS multi-element analysis of 95 carefully selected obsidian artifacts from four neolithic period sites in southwestern Sardinia. The patterns of exploitation of specific Monte Arci obsidian subsources revealed in this study support a down-the-line model of obsidian trade during the neolithic period, but with chronological changes that are best explained by increased socioeconomic complexity.

INTRODUCTION

The existence of obsidian sources on Sardinia (Italy), and their usage by prehistoric cultures for a variety of stone tools, has been widely known at least since the 19th century when early geological and archaeological studies were conducted [1, 2]. While it was generally thought that obsidian artifacts found in Sardinia would have actually come from the natural sources at Monte Arci, and not from one of the other central Mediterranean island sources, chemical analyses to fingerprint sources and match artifacts to them were not successful until the 1960s, and very little was done in Sardinia until the 1980s, when it became clear that there were multiple subsources on Monte Arci that could be chemically distinguished [3, 4]. Detailed survey and analysis of geological samples from Monte Arci have since then identified at least seven subsources of usable obsidian, and demonstrated that different chronological and geographic patterns of their usage made it necessary to assign artifacts to specific subsources and not just to Monte Arci [5-9]. Possible explanations for this include differences in the quantity and physical properties of obsidian from each subsource; the accessibility of the subsources and the modes of transport; and changes in the socioeconomic system involved in production and exchange [10]. Type SA obsidian exists *in situ* in a concentrated area near Conca Cannas on the southwestern slopes of Monte Arci, and is black-gray, fairly glassy, with a high level of transparency. Types SB1(a,b,c) and SB2 may be found in multiple outcrops on the western slopes, but in less concentrated quantities, and varies from transparent to opaque, sometimes with many phenocrysts. Type SC obsidian, which is black, opaque, and less glassy, is abundant in mainly secondary deposits on the east side of Monte Arci [7, 11, 12].

It is generally thought that earlier neolithic societies were egalitarian in nature, while specialization in labor activities and the emergence of social/economic ranking are thought to have emerged during the late neolithic period. This is examined here by establishing whether there was consistency or change over time in the use of obsidian subsources in Sardinia, as well as any geographic variation in their usage. Obsidian artifacts were selected from four archaeological sites in southern Sardinia (Figure 1) to complement the previous studies done on a significant number of sites and artifacts in northern Sardinia and in Corsica [6, 11, 13, 14]. Those studies suggested that there was a major chronological change, mainly with a shift from all three major Sardinia subsource groups (SA, SB, SC) being used during the Early Neolithic (ca. 5700-4700 BC), to negligible use of SB and greater use of SC by the Late Neolithic (ca. 4000-3200 BC). This study tested whether or not the same patterns existed in southern Sardinia, and therefore the hypothesis that socioeconomic systems rather than subsource location/access were the main factors in obsidian artifact production and exchange.

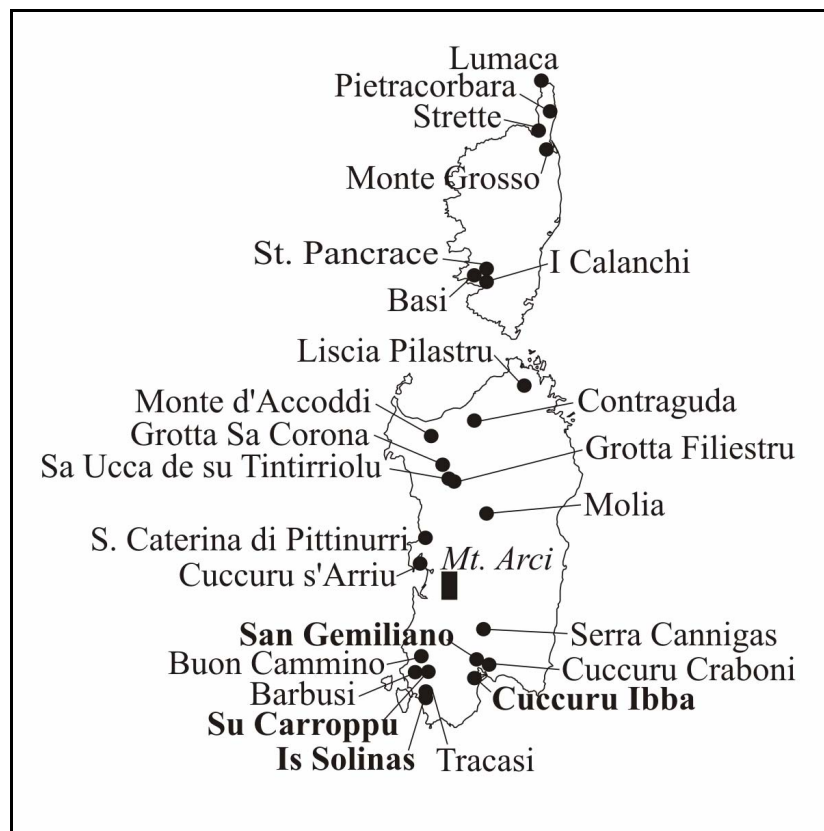


Figure 1. Neolithic sites in Sardinia and Corsica mentioned in this paper. Sites with obsidian tested in this study are in bold.

ARCHAEOLOGICAL SAMPLES

Archaeological samples were selected in 2002, from four neolithic sites in southern Sardinia, with the specific intention of expanding upon the limited data on obsidian source patterns in the region south of the Monte Arci sources. The only previous study, by J. Michels et

al. [15], used atomic absorption spectroscopy to analyze a total of 53 artifacts from 5 neolithic period sites, all in the southwestern most part of Sardinia, in the Iglesias and Carbonia regions. The selection of 95 samples from these four sites would significantly expand the data available for comparing subsurface patterns in different regions.

Su Carroppu (Sirri, Carbonia) is an Early Neolithic site located in southwestern Sardinia. In the form of a rock-shelter, excavations were done in the 1960s and 1970s by Enrico Atzeni, producing at least a few hundred obsidian artifacts [16-18]. A set of 15 obsidian samples were initially analyzed by Michels et al. [15], while another 20 artifacts were tested in this study (Figure 2a). A separate project, on 63 samples, was recently done by Lugliè et al. [19], using particle induced X-ray emission (PIXE).

Is Solinas (Giba) is a Late Neolithic open-air site located in the southwestern corner of Sardinia, very close to the Golfo di Palmas. A surface collection of obsidian, numbering in the thousands, and other lithic and ceramic materials were made by Atzeni [20]. A set of 24 samples were selected for analysis.

Cuccuru Ibba (Capoterra) is another Late Neolithic open-air site, located on the western side of the Stagno di Cagliari, not far from the Nuragic (Bronze Age) settlement of the same name, in an area now submerged. A large quantity of Ozieri (Late Neolithic) ceramic materials were collected on the surface by farmers, along with flint and obsidian tools, and marine shells [21-22]. Twenty-nine obsidian artifacts were selected for analysis.

San Gemiliano (Sestu) is a Late Neolithic village settlement located inland, due north of Cagliari. The extensive site consists of the remains of hut dwellings spread over several hectares, and large numbers of lithic and ceramic artifacts have been collected from surface deposits [23]. Twenty-two obsidian artifacts were selected for analysis (Figure 2b).

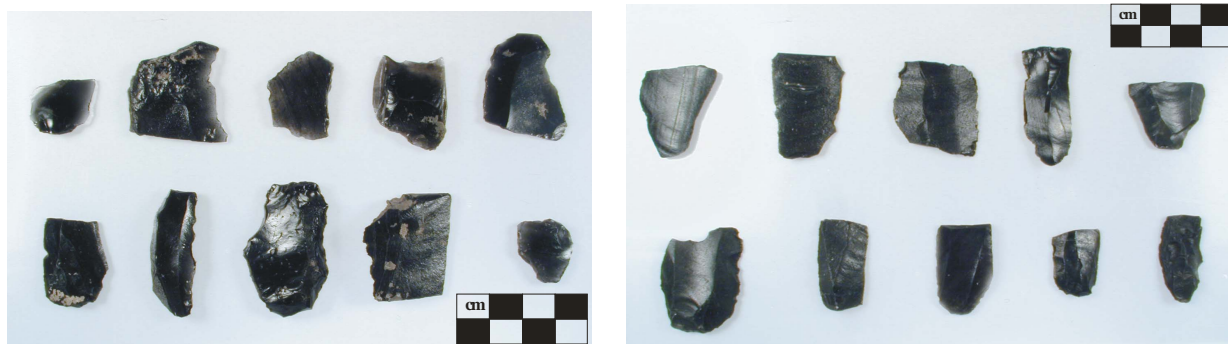


Figure 2. Examples of obsidian artifacts tested, from (a) Su Carroppu (left) and (b) San Gemiliano (right).

METHODS

It has been widely demonstrated that many different analytical methods have the capability of distinguishing between obsidian subsources, if geological samples from known localities are also analyzed to compare with. The most widely used methods for Mediterranean obsidian have been instrumental neutron activation analysis (INAA), X-ray fluorescence (XRF), the electron microprobe, and more recently, particle induced X-ray emission (PIXE) and laser ablation ICP mass spectrometry (LA-ICP-MS) [11, 24-25]. The main issues for archaeologists

selecting one of these methods have been cost, availability, and whether they are destructive to artifacts. In this study, LA-ICP-MS was specifically selected because of its low per-sample cost and negligible destructive effect.

ICP mass spectrometry was applied to obsidian sourcing in the Mediterranean nearly two decades ago, but the initial laser ablation units and software available at that time were not user-friendly, while producing liquid solutions from volcanic obsidian required the use of potentially harmful acids (e.g. HF) at high temperatures and pressures [26]. So even though the quadrupole ICP-MS system used at the time was successful in distinguishing obsidian subsources and analyzing other archaeological materials [27], other low-cost, minimally destructive analytical methods (mainly the electron microprobe) were used by the first author for his dissertation research [2, 6-7].

Since that time, newer ICP-MS instruments and accessories have been developed, and LA-ICP-MS was chosen for this study as part of a larger central Mediterranean project investigating obsidian subsources on other islands (Lipari, Palmarola, Pantelleria) that would not be differentiable using the electron microprobe, which is limited to detecting major and minor elements. Details on the instrument and methods used for the LA-ICP-MS instrument at the Missouri University Research Reactor follow, while the results obtained for these other island sources as well as archaeological sites in various parts of Italy, have been published elsewhere [25, 28-34].

The obsidian samples in this study were analyzed using a Thermo Elemental Axiom high resolution magnetic sector ICP mass spectrometer capable of resolving masses as close as 0.001 atomic mass units apart. The ICP-MS was coupled to a Merchantek Nd-YAG 213-nanometer laser ablation unit, and up to ten samples were mounted in the laser ablation chamber at any one time. The laser was operated at 80% power (~1.5 mJ) using a 200 Fm diameter beam, firing at 20 times per second. A rectangular raster pattern of approximately 4 mm² was drawn over a relatively flat spot on each sample. The laser scanned across the raster area at 70 Fm per second. The laser beam was allowed to pass over the ablation area one time prior to data acquisition in order to remove possible contaminants from the surface of the sample, and to permit time for sample uptake and for the argon plasma to stabilize after the introduction of fresh material. Analytes of interest were scanned three times and averaged. In most cases, the %RSD was 5-10%.

Standardization was accomplished by calibrating the instrument with the NIST SRM-610 and SRM-612 glass wafers doped with 61 elements. Two obsidian glasses calibrated in a round-robin exercise by the International Association of Obsidian Studies were also used. Monitoring the amount of material removed by the laser and transported to the ICP is complicated by several factors making normalization difficult. Conditions such as the texture of the sample, hardness of the sample, location of the sample in the laser chamber, laser energy, and other factors affect the amount of material introduced to the torch. A normalization method described by Gratuze et al. [35] was employed here.

In the current study, about 40 elements were measured using a resolution of 6000. The high resolution was necessary to reduce the number of ions striking the multiplier caused by several of the high concentration elements (esp. Na, Al, Si, K, and Fe). Relative concentrations for all elements were determined by comparing the unknowns to the NIST glass and obsidian standards. To convert the relative concentrations into absolute values, normalization was accomplished converting the relative concentrations to oxides and then normalizing the total to 100%. The method yields satisfactory concentrations for all major and trace elements.

RESULTS AND DISCUSSION

The results of the LA-ICP-MS analyses are clearly grouped into the four primary Monte Arci subsources (SA, SB1, SB2, SC) as illustrated in Figure 3. While it is possible to discriminate between SC subsources (SC1, SC2) and SB1 sub-subsources (SB1a, SB1b, SB1c), such distinctions are not significant for this study (see [11]). A simple bi-plot of element ratios Fe/Cs vs. Sm/Sr is sufficient to separate these subsources, while multivariate statistical analyses provide even clearer distinctions. The numeric results for each of the four sites tested in this study are provided in Table 1.

A comparison by chronological phases of the percentages of the three main subsources (SA, SB, SC) used at all studied sites in southern Sardinia [this study; 15, 19] indicates that there were general changes from the Early to Middle to Late Neolithic time periods, with a big drop in the presence of type SB obsidian, and a major increase in the use of type SC (Figure 4).

When the subsource percentages for Su Carroppu are compared with the data for other Early Neolithic sites in Sardinia (Santa Caterina, Filiestru, Sa Corona) and in Corsica (Strette, Pietracorbara, Lumaca), there are clearly very similar patterns of usage, especially of type SB obsidian [36] (Figure 5). A similar comparison, for the three Late Neolithic sites tested in this study, with others in southern (Barbusa, Tracasi) and northern (Molia, Sa Ucca, Filiestru, Monte d'Accoddi, Contraguda, Li Muri, Liscia Pilastro) Sardinia, and in Corsica (I Calanchi, Basi, Saint Pancrace, Monte Grosso, Strette), again shows similarity in obsidian subsource usage across these major regions (Figure 6). For these Late Neolithic sites it is also clear that type SB obsidian has become of negligible importance, while type SC obsidian dominates most of the assemblages tested.

The presence of obsidian from two or three subsources at each archaeological site tested in this study, with similarity in patterning with sites in northern Sardinia and Corsica, strongly suggests broad geographic similarity both in the purpose of obsidian usage, and in the socio-economic circumstances in which it occurred. The absence of strong outliers supports a down-the-line model of obsidian trade during the neolithic period, in which the quantity/frequency of obsidian in lithic assemblages decreases with distance from Monte Arci, but with similar representation of the multiple obsidian subsources. The geographically consistent decrease in the use of the SB subsource by the Late Neolithic period is likely to result from the modest geological quantity accessible on the west side of Monte Arci, at a time when increased production and exchange of the greater quantity of accessible SC obsidian is supported by the high levels of primary reduction revealed by survey and excavation in the Sennixeddu area on the east side of Monte Arci [37].

Table 1. Obsidian sourcing results for the archaeological sites tested in this study.

Site	Time Period	No.	SA	SB	SC
Su Carroppu (Sirri, Carbonia)	Early Neolithic	20	8	5	5
S. Gemiliano (Sestu)	Late Neolithic	22	4		17
Cuccuru Ibba (Capoterra)	Late Neolithic	29	16		13
Is Solinas (Carbonia)	Late Neolithic	24	3	1	20
	<i>Total tested</i>	95	31	6	55
			33.7%	6.5%	59.8%

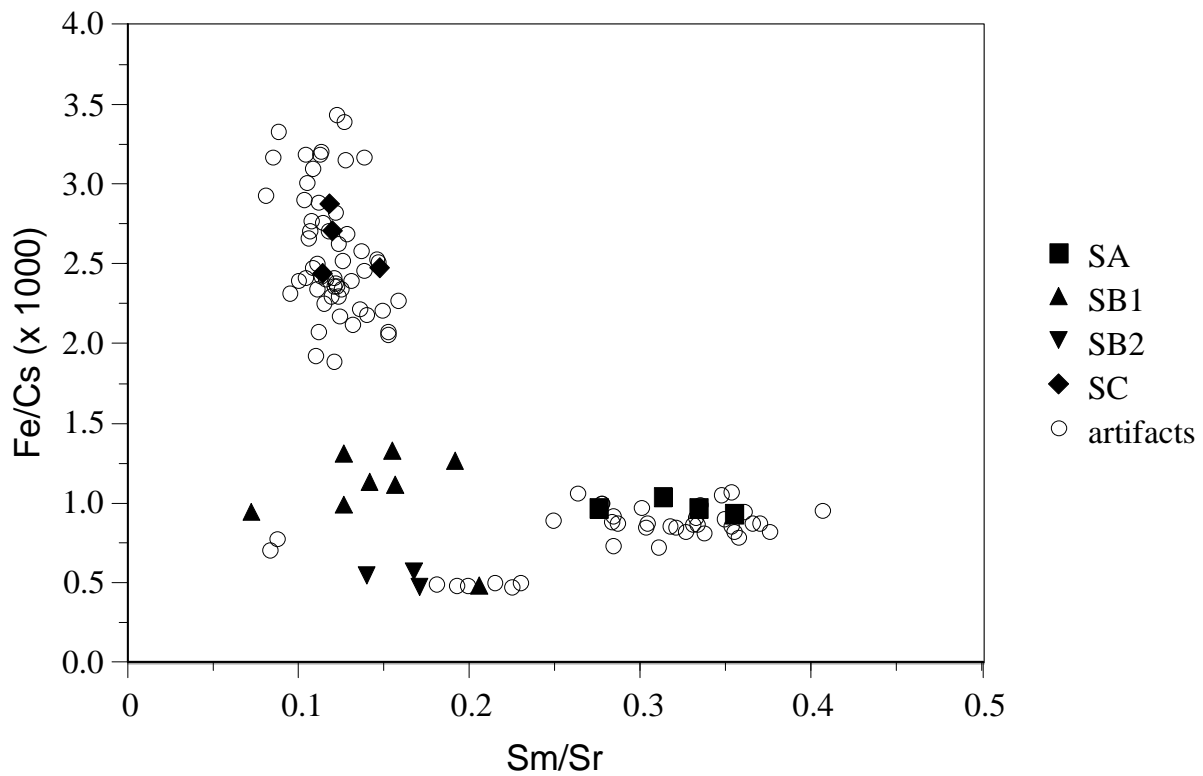


Figure 3. Laser ablation ICP mass spectrometry (LA-ICP-MS) data discriminating Monte Arci subsources (solid symbols) and the archaeological obsidian artifacts tested (open circles).

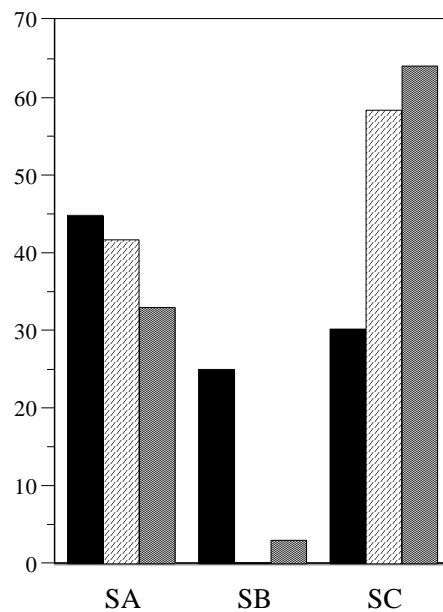


Figure 4. Bar chart of obsidian usage in southern Sardinia during three Neolithic time periods (Early Neolithic = blue, Middle Neolithic = green, Late Neolithic = red)

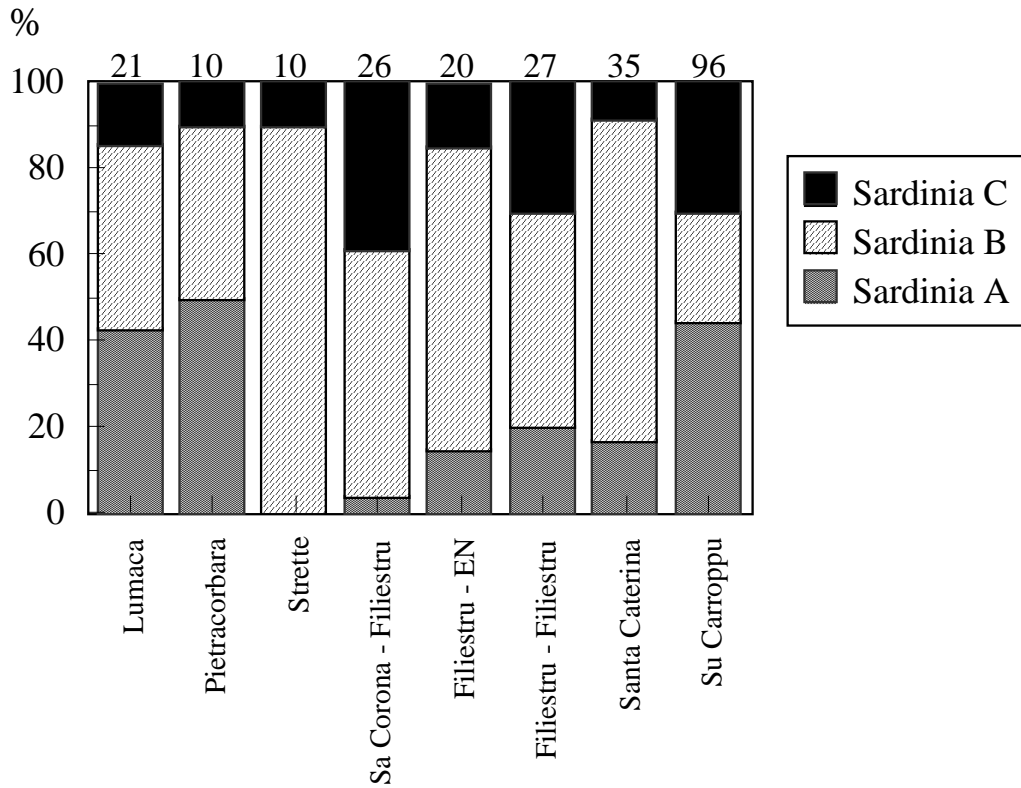


Figure 5. Bar chart of obsidian sources used at Early Neolithic sites in Sardinia and Corsica. Number of samples tested for each site shown at the top.

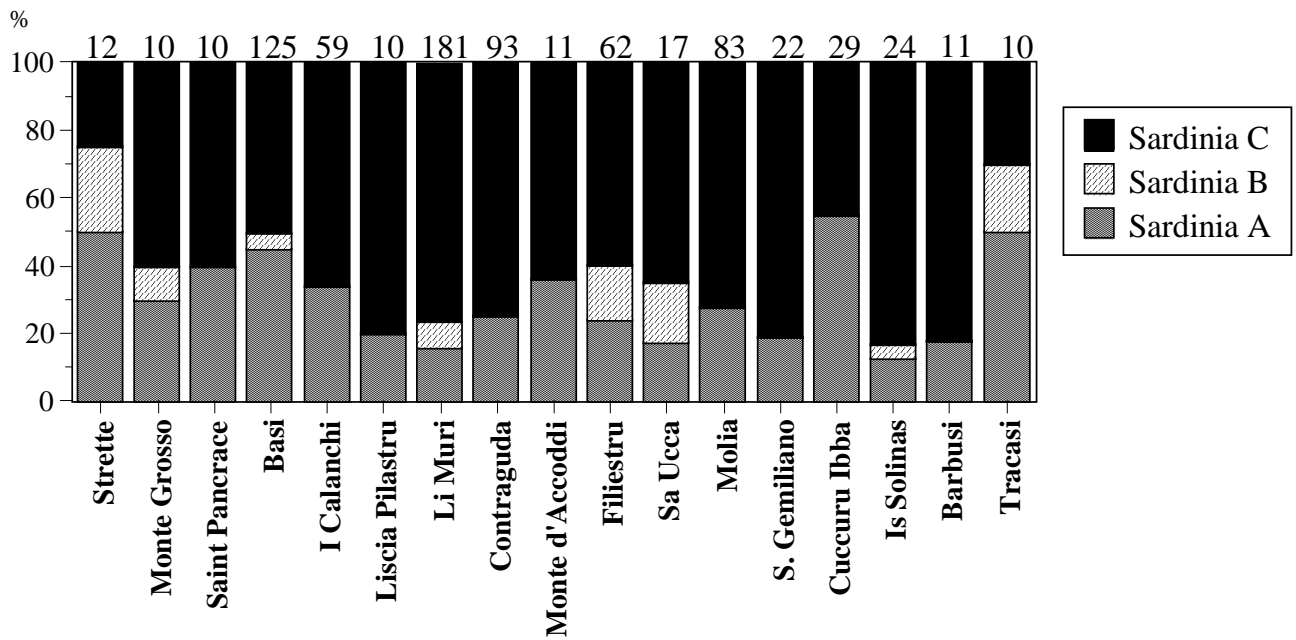


Figure 6. Bar chart of obsidian sources used at Late Neolithic sites in Sardinia and Corsica. Number of samples tested for each site shown at the top.

